



Valleyside Knatts Valley Road

Knatts Valley, Borough Green, Kent, TN15 6XY Freehold

 3

 2

 1

 D

Asking Price £675,000

A detached chalet bungalow set in over half an acre with stunning rural views, sitting room, kitchen/dining room, three bedrooms, shower room, bathroom, generous gardens, driveway for a number of cars, garage with electric door and NO ONWARD CHAIN; situated in a beautiful rural location in Knatts Valley.

Overview

- Detached chalet bungalow
- Stunning rural views
- Dual-aspect sitting room
- Kitchen/dining room
- Three bedrooms
- Bathroom & shower room
- Over half an acre plot
- Driveway & garage
- No onward chain
- Council tax band E

Ground-floor accommodation: entrance hall with stairs to first floor and cupboard below; dual-aspect sitting room with patio door to garden; kitchen/dining room with wall and base units, island, laminate worktops, sink with drainer, induction hob with extractor above, built-in oven and microwave oven, integrated dishwasher, spaces for washing machine and fridge/freezer and doors to garden; bedroom three; and bathroom with bath with mixer tap and shower spray, shower screen, WC, washbasin and heated towel- rail.

First-floor accommodation: landing with Velux window; bedroom one with Velux window, and walk-in wardrobe; bedroom two; bedroom three; and shower room with walk-in shower, WC, washbasin, and loft access.

The property also benefits from: double glazed windows, oil fired central heating, gated driveway, detached garage, pleasant gardens mainly laid to lawn, plants, shrubs, trees, rockery, decking, oil tank and cupboard housing oiled fired boiler.



The village of West Kingsdown, with its variety of shops, two pubs, restaurants/takeaways, doctors surgery, primary school, library, petrol station and churches, Brands Hatch Mercure Hotel and Spa with its fitness centre and pool; and the famous Brands Hatch Circuit, is approximately 2 miles away.

The historic village of Otford, with its selection of shops, pubs, restaurant, primary school, church and railway station, with services to London Bridge, Charing Cross and Victoria, Maidstone is approximately 3.5 miles away.

Sevenoaks town, with its comprehensive range of educational, recreational and shopping facilities, and railway station with services to London Bridge, Cannon Street and Charing Cross, is approximately 6.5 miles away.

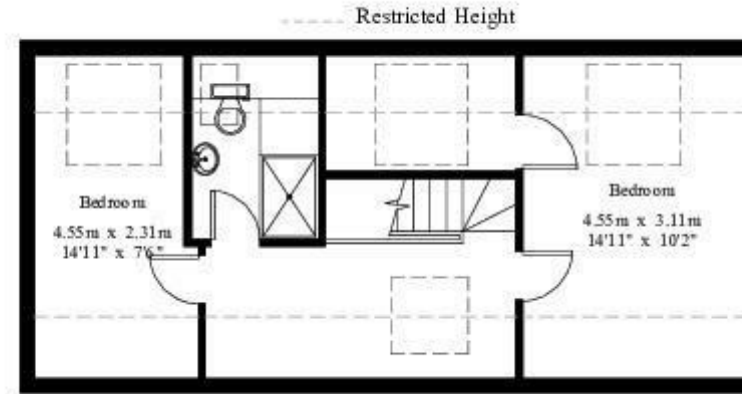
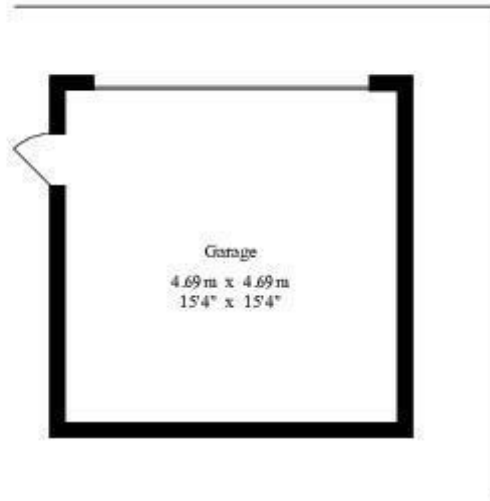
Junction 3 of the M25, with access to both the M25 and the M20, is approximately 5.5 miles away.

Bluewater Shopping Centre and Ebbsfleet International station (with fast services to London Stratford and Kings Cross St. Pancras) are both approximately 10.5 miles away.



Valleyside

House - Gross Internal Area : 105.1 sq.m (1131 sq.ft.)
Garage - Gross Internal Area : 21.9 sq.m (235 sq.ft.)



First Floor



Ground Floor



For Identification Purposes Only.
© 2022 Trawagon (UK) Limited (01592) 614 081

Kings gives notice that: 1 These particulars do not constitute an offer or contract or part of one and must not be relied upon as statements or representations of fact; and we have no authority to make or give any representation or warranties in relation to the property. 2 These particulars have been prepared in good faith and to be used as a general guide. They are not exhaustive and include information provided to us by other parties including the seller, of which may not have been verified. 3 The measurements, areas, distances, orientation and floor plans are approximate and should not be relied on. The text, floor plans and photographs are only for guidance and are not necessarily comprehensive. The photographs may not be current and certain aspects may have changed since the photographs were taken. 4 It should not be assumed that the property has all necessary planning, building regulation or other consents. 5 We have not tested any services, appliances or fittings. 6 Purchasers should satisfy themselves by inspection, searches, enquiries, surveys, and professional advice about all relevant aspects of the property

51 Western Road, Borough Green, Kent, TN15 8AN
T: 01732 885585

boroughgreen@kings-estate-agents.co.uk

kings-estate-agents.co.uk

